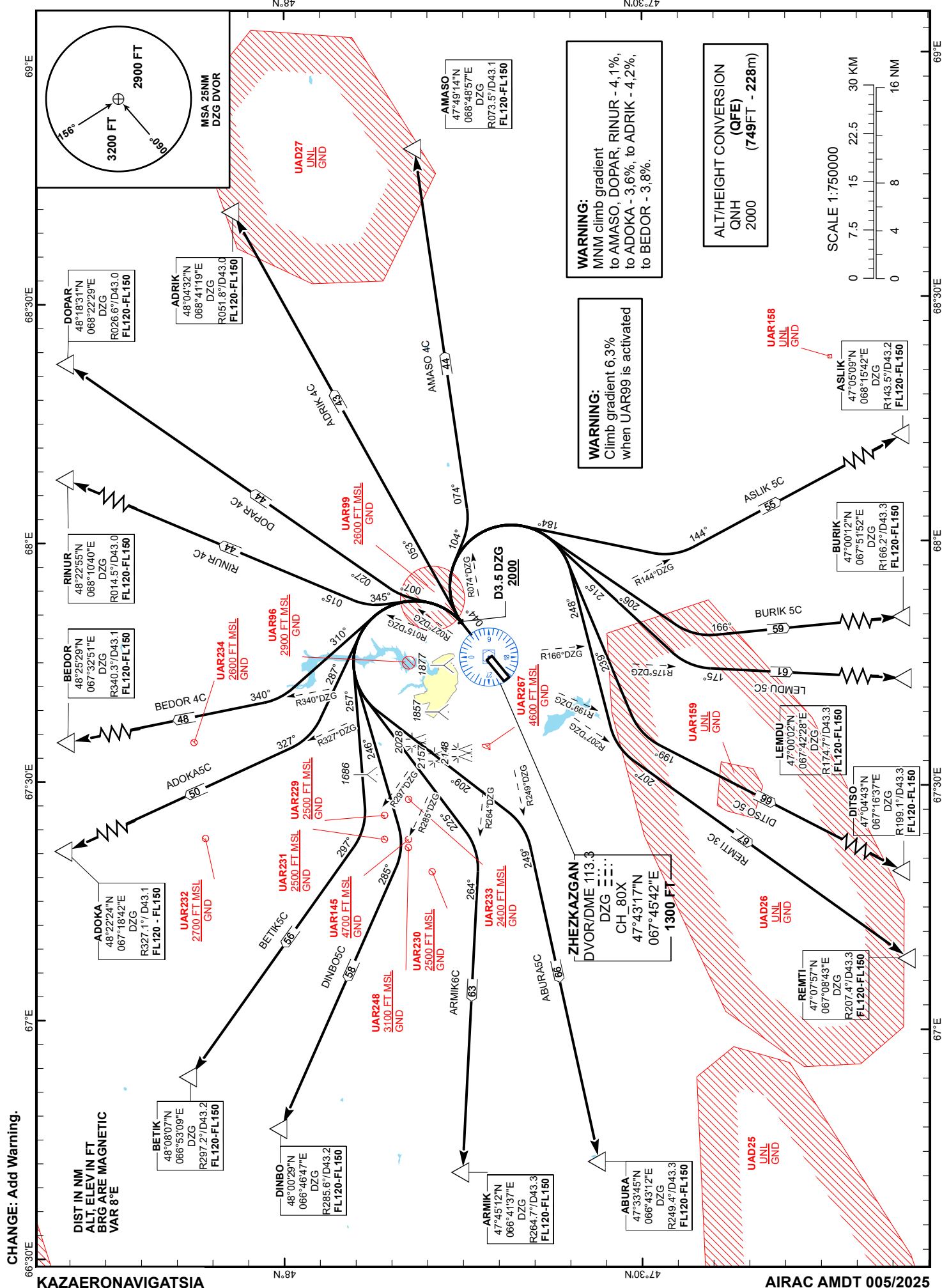


**ZHEZKAZGAN TOWER 127.1**  
**ZHEZKAZGAN ATIS (EN) 131.4**  
**ZHEZKAZGAN ATIS (RU) 122.4**

ABURA 5C, ADOKA 5C, ADRIK 4C,  
AMASO 4C, ARMIK 6C, ASLIK 5C,  
BEDOR 4C, BETIK5C, BURIK 5C,  
DINBO5C, DITSO 5C, DOPAR 4C,  
LEMDU 5C. REMTI 3C. RINUR 4C.

ZHEZKAZGAN  
RWY 04



STANDARD DEPARTURE ROUTES – INSTRUMENT (SID) ZHEZKAZGAN RWY 04	
<b>RINUR 4C</b> After take-off climb straight ahead to 2000 or above. At 3.5NM DZG, turn LEFT on track 345° until intercept R015°DZG, then proceed on track 015° to RINUR (R014.5° D43.0NM DZG). Cross RINUR at FL120 - FL150.	<b>REMTI 3C</b> After take-off climb straight ahead to 2000 or above. At 3.5NM DZG, turn RIGHT on track 248° until intercept R207°DZG, then proceed on track 207° to REMTI (R207.4° D43.3NM DZG). Cross REMTI at FL120 - FL150.
<b>DOPAR 4C</b> After take-off climb straight ahead to 2000 or above. At 3.5NM DZG, turn LEFT on track 007° until intercept R027°DZG, then proceed on track 027° to DOPAR (R026.6° D43.0NM DZG). Cross DOPAR at FL120 - FL150.	<b>ABURA 5C</b> After take-off climb straight ahead to 2000 or above. At 3.5NM DZG, turn LEFT on track 209° until intercept R249°DZG, then proceed on track 249° to ABURA (R249.4° D43.3NM DZG). Cross ABURA at FL120 - FL150.
<b>ADRIK 4C</b> After take-off climb straight ahead to 2000 or above. At 3.5NM DZG, turn RIGHT on track 053° to ADRIK (R051.8° D43.0NM DZG). Cross ADRIK at FL120 - FL150.	<b>ARMIK 6C</b> After take-off climb straight ahead to 2000 or above. At 3.5NM DZG, turn LEFT on track 225° until intercept R264°DZG, then proceed on track 264° to ARMIK (R264.7° D43.3NM DZG). Cross ARMIK at FL120 - FL150.
<b>AMASO 4C</b> After take-off climb straight ahead to 2000 or above. At 3.5NM DZG, turn RIGHT on track 104° until intercept R074°DZG, then proceed on track 074° to AMASO (R073.5° D43.1NM DZG). Cross AMASO at FL120 - FL150.	<b>DINBO 5C</b> After take-off climb straight ahead to 2000 or above. At 3.5NM DZG, turn LEFT on track 246° until intercept R285°DZG, then proceed on track 285° to DINBO (R285.6° D43.2NM DZG). Cross DINBO at FL120 - FL150.
<b>ASLIK 5C</b> After take-off climb straight ahead to 2000 or above. At 3.5NM DZG, turn RIGHT on track 184° until intercept R144°DZG, then proceed on track 144° to ASLIK (R143.5° D43.2NM DZG). Cross ASLIK at FL120 - FL150.	<b>BETIK 5C</b> After take-off climb straight ahead to 2000 or above. At 3.5NM DZG, turn LEFT on track 257° until intercept R297°DZG, then proceed on track 297° to BETIK (R297.2° D43.2NM DZG). Cross BETIK at FL120 - FL150.
<b>BURIK 5C</b> After take-off climb straight ahead to 2000 or above. At 3.5NM DZG, turn RIGHT on track 206° until intercept R166°DZG, then proceed on track 166° to BURIK (R166.2° D43.3NM DZG). Cross BURIK at FL120 - FL150.	<b>ADOKA 5C</b> After take-off climb straight ahead to 2000 or above. At 3.5NM DZG, turn LEFT on track 287° until intercept R327°DZG, then proceed on track 327° to ADOKA (R327.1° D43.1NM DZG). Cross ADOKA at FL120 - FL150.
<b>LEMDU 5C</b> After take-off climb straight ahead to 2000 or above. At 3.5NM DZG, turn RIGHT on track 215° until intercept R175°DZG, then proceed on track 175° to LEMDU (R174.7° D43.3NM DZG). Cross LEMDU at FL120 - FL150.	<b>BEDOR 4C</b> After take-off climb straight ahead to 2000 or above. At 3.5NM DZG, turn LEFT on track 310° until intercept R340°DZG, then proceed on track 340° to BEDOR (R340.3° D43.1NM DZG). Cross BEDOR at FL120 - FL150.
<b>DITSO 5C</b> After take-off climb straight ahead to 2000 or above. At 3.5NM DZG, turn RIGHT on track 239° until intercept R199°DZG, then proceed on track 199° to DITSO (R199.1° D43.3NM DZG). Cross DITSO at FL120 - FL150.	